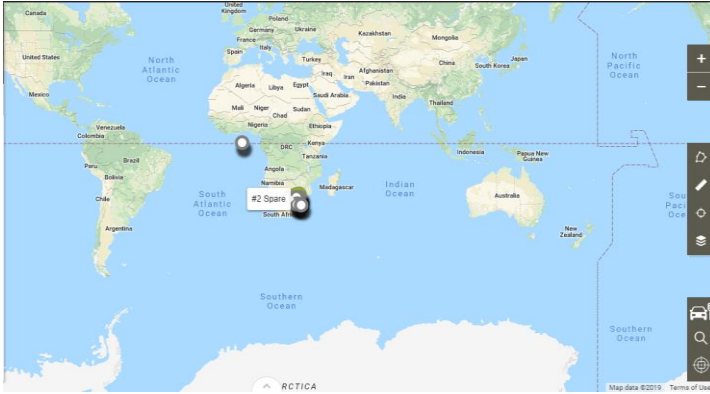
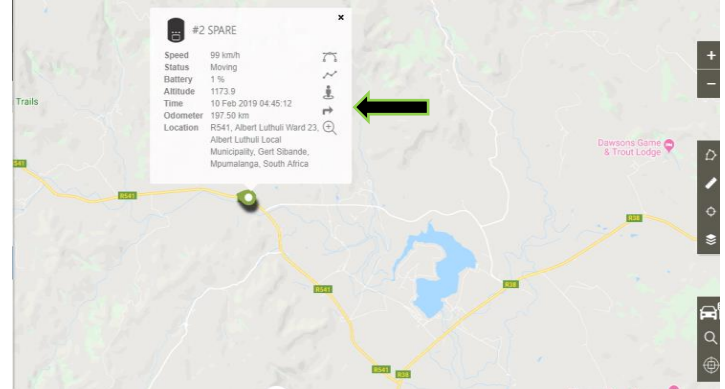


Software User Guide

Support Page : Instructions

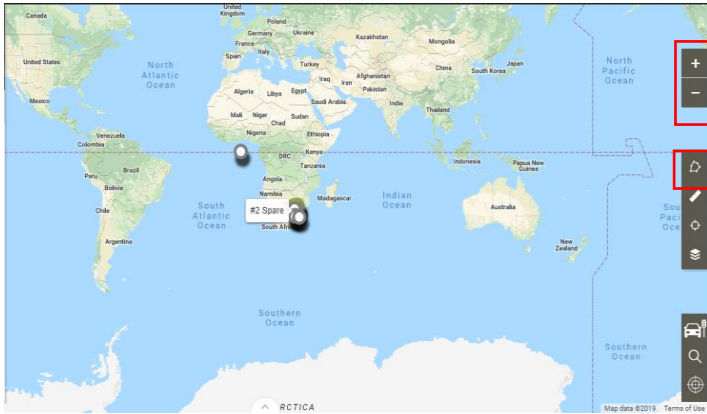


Landing Page of the Software: Select your group & then your device to track in the upper left-hand Corner of the screen, (i.e. justTRAC TEST UNITS, Then your device/s show)

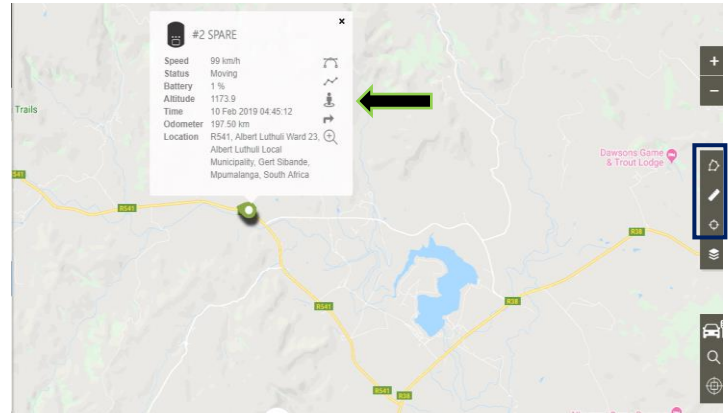


Map Display Changes: View the location of the device by clicking on the device icon. An information box will pop-up & give the device's real-time information: Current Speed / Status moving or not / Date & Time / Location

Functions on Right Hand Side of the Map

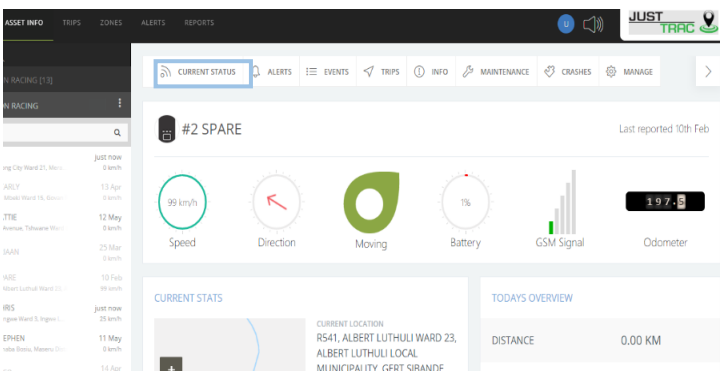


“+” & “-” – Use this to zoom in (+) or zoom out (-) on the Map
Circular Icon – use this to create No-Go Zones, Keep-In Zones, Routes (created on map) & Locations

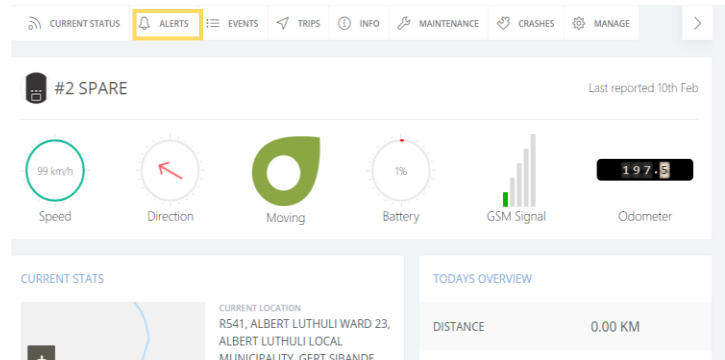


Straight Linear Icon – Measure distance on the Map
Target Icon – Find the closest Asset / Device on the map from where you have pin pointed.
Squares Icon – Toggle different options that should be displayed on the Map i.e. Routes Drawn + No-Go Zones

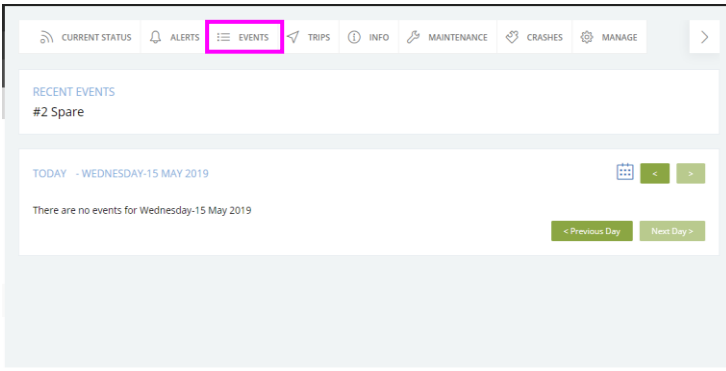
Asset info Page – Remember: Select your device on the Map to view device information!



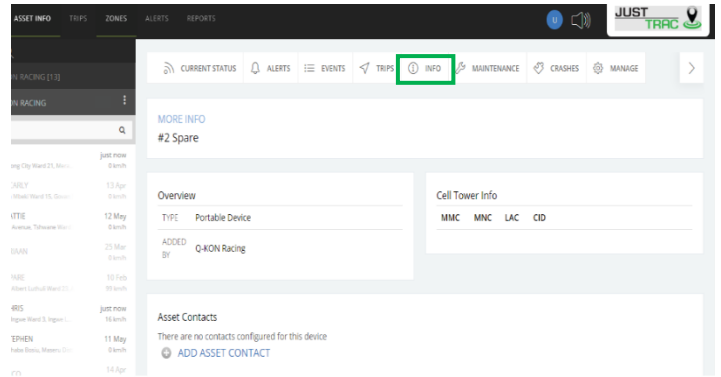
Current Status Bar – Displays General information



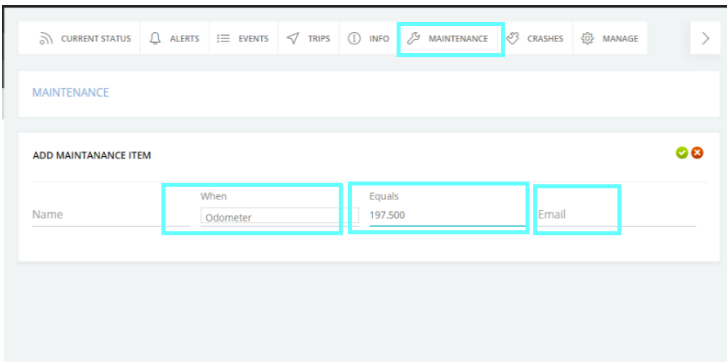
Alerts Bar – Show all the alerts, if any, that your device has sent. Choose specifics i.e. month / day. Alerts included enter No-Go Zone, going out of a Keep-In Zone, or any Alert that has been preset by the user



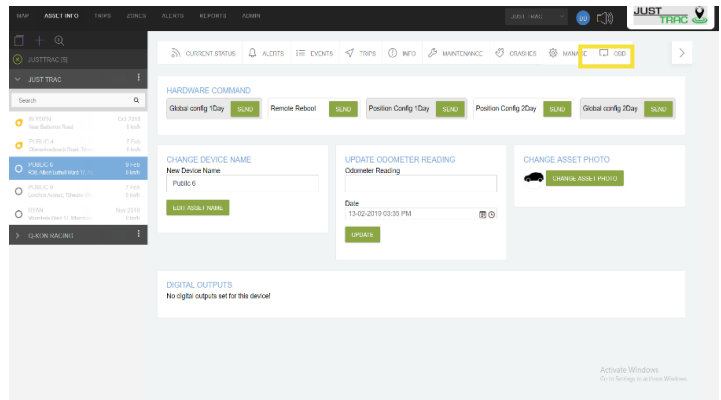
Events Bar – Get quick access to the devices Trips on any date. Select the **Trips Bar** to see the trip/s on the Map



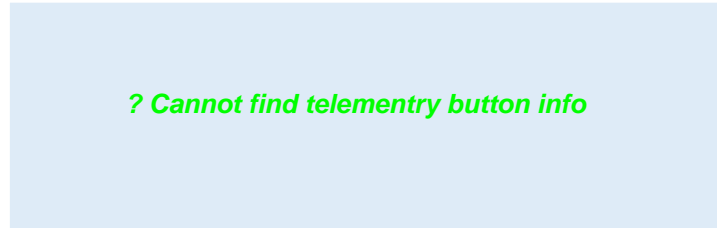
Info Bar – View general information of the device.
Asset Contacts – Add a contact for the device, i.e. the owner / driver of the device with his details.



Maintenance Bar – By clicking on the “+ maintenance item” icon you can add an alert via email to notify you to do maintenance on your vehicle.
When – Choose between Odometer, Date or Engine Hours to measure your maintenance intervals.
Equals – If you choose Odometer, then you should enter the required distance before the vehicle gets serviced i.e. km (Note: you need to update the equals field after the required stance and the email alert is reached).
Email – Enter the email address that the alert for maintenance needs to be sent to.

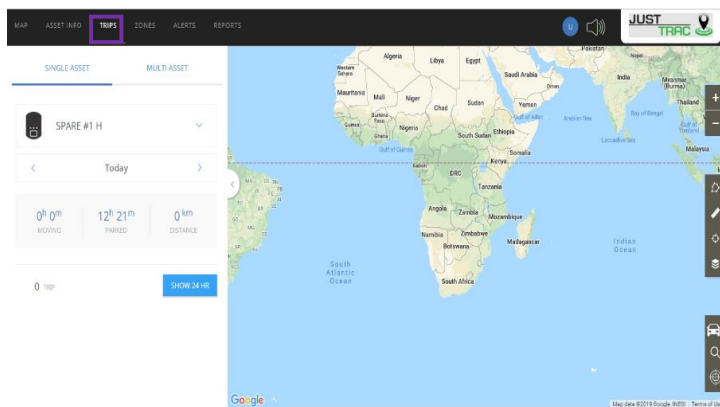


Manage: The client can send new device configuration files that will be launched in the future and will be

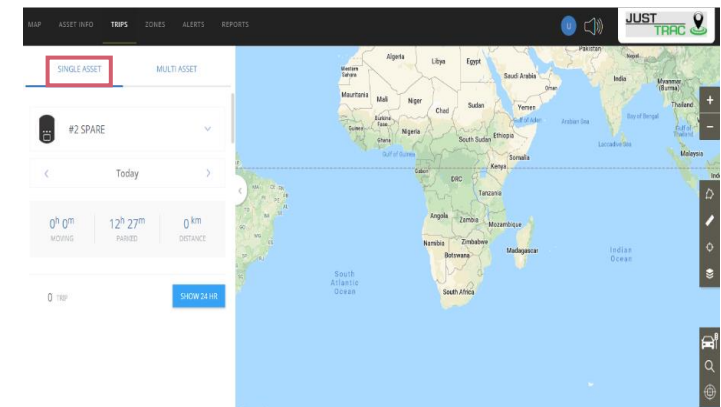


Telemetry button Info – This table displays the event that happened on the date, the time, the location as well as the current speed of the event & the maximum speed of the device, it also shows the battery of the device. Odometer indicates how far the device has travelled until the time of the event. (Also includes all other trips).

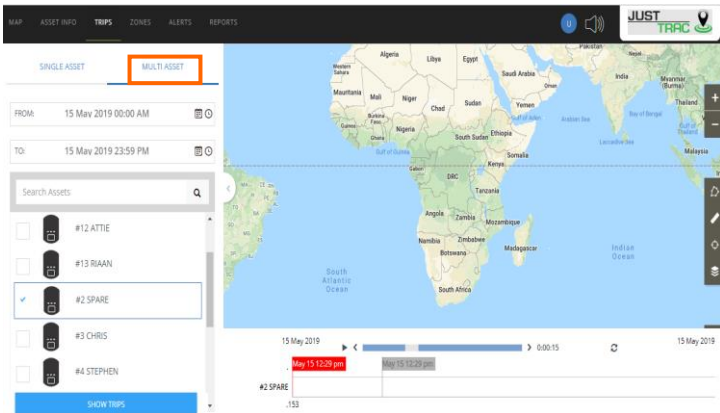
Trips Tab



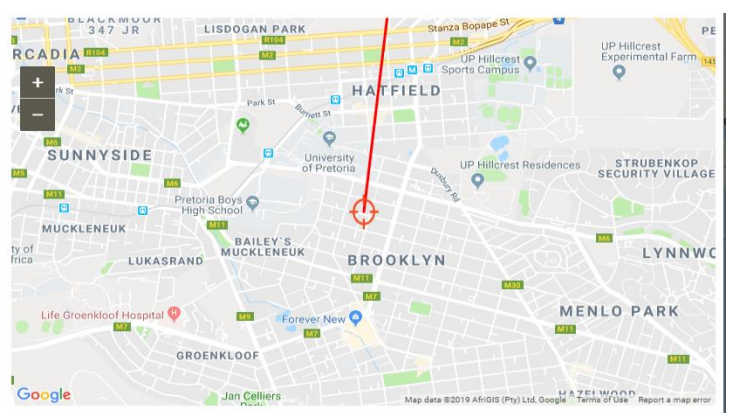
Trips: Choose your group, then your device & the date to view the trips that have happened on the date.



Single Asset – If you zoom in & click on an icon, the asset info at the certain moment will be displayed.

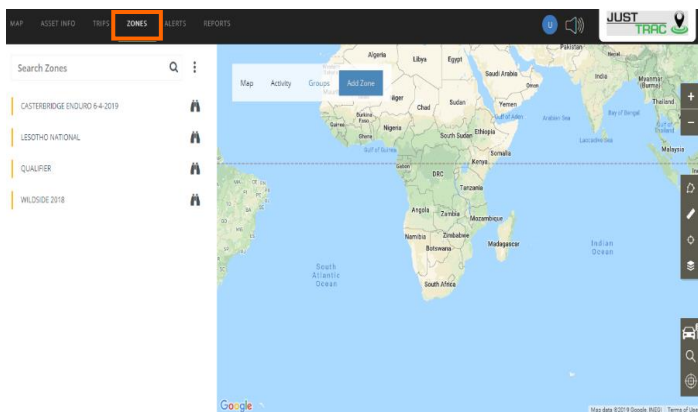


Multi Asset - two or more assets' trips can be chosen to display at the same time on the map. Also, the date and specific times can be chosen to specifically compare device trips.



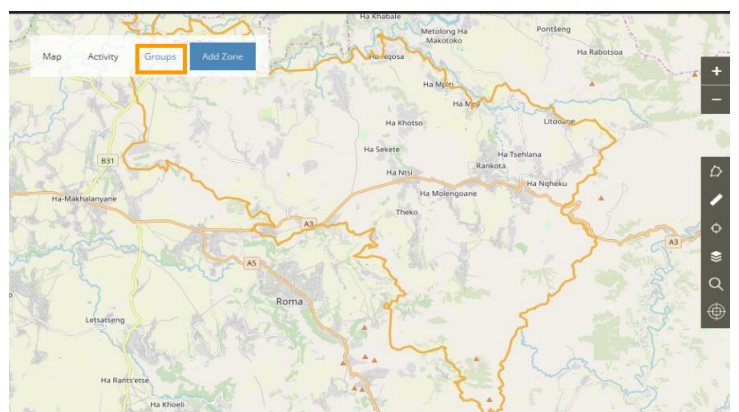
Example – If you zoom in & click on an icon, the asset info at the certain moment will be displayed.

Zones Tab

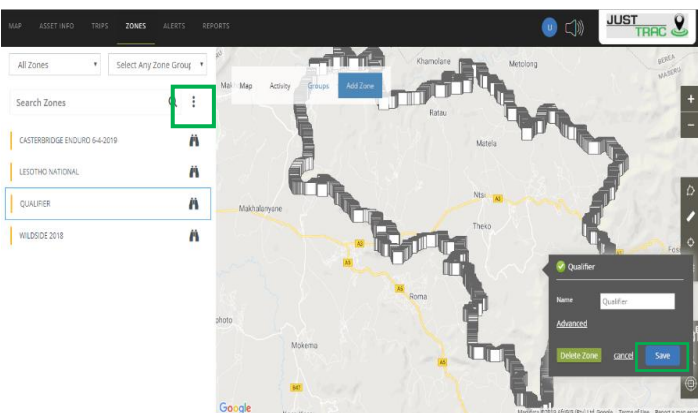


Create Zones/Activity – the devices daily activity regarding zone (No-Go zone, locations of keep in zones) can be reviewed with time of the event.

Import a Route – click on the gpx button on the top right-hand corner & browse your computer to find & select the file. You can save the imported round in the ZONE group, & it allows easier access for future use.



Group Function – Located next to the add zone button at the top of the page. The Group function is where route groups are created and edited by the client.



To Assign a Zone / Route to Device – select a Group & then select the Route, i.e. September 2017. Click on Save. The route will be visible to all devices in that specific group.

To Select Set of Routes – click on the gpx button on the top right-hand corner & browse your computer to find & select the file. You can save the imported round in the ZONE group, & it allows easier access for future use.



Return to the Map Tab, click on the Overlay Icon (4 stacked squares middle right), & click next to the "Routes" section in the small tab.